



What is FMAT?

FMAT is an innovative 3-year accelerated medical school curriculum that culminates in the M.D. degree and leads to a standard 3-year family medicine residency in one of three Texas Tech Programs; Lubbock, Amarillo, or the Permian Basin.

The FMAT program offers students a seamless transition between their predoctoral and residency training settings and curricula, as they spend two years in Lubbock, followed by at least four years on a campus where they will complete both the final year of medical school and three years of family medicine residency training.

Our Purpose

- The Family Medicine Accelerated Track aims to increase the number of medical students choosing a career in family medicine, especially in underserved areas, who will provide patient-centered care.
- As this is a condensed program, this family medicine degree prepares primary care physicians more efficiently and with less cost.

Our Curriculum

FMAT1 Course (Lubbock)

- 8-Week Summer concentrated course to prepare for the Family Medicine clerkship.
- Case-based didactic and small-group sessions across seven themes with both basic science and family physician facilitators

FMAT2 Course (Lubbock)

- Outpatient clinic and inpatient hospital service
- Geriatrics and palliative care experiences
- Evaluation includes shelf exams, OSCE, and other family medicine clerkship evaluations.

FMAT3 Course (Amarillo, Lubbock, or Permian Basin)

- This 12-week capstone course is taken during April to June of Year 3 to fulfill the objectives for courses normally required in Year 4, including critical care, family medicine sub-internship, and transition to residency experiences.

TTU  **HSC**
MEDICINE

Family Medicine

**ACCELERATED
TRACK**



Family Medicine

Accelerated Track



FMAT CONTACTS


Betsy Jones, EdD
Professor of Medical Education
FMAT Co-Director
betsy.jones@ttuhsc.edu

Ron Cook, DO, MBA
Professor of Family Medicine
FMAT Co-Director
ron.cook@ttuhsc.edu

Felix Morales, MD
Professor of Family Medicine
Associate Dean of Admissions
felix.morales@ttuhsc.edu

Kale Bates, BS
FMAT Coordinator
kale.bates@ttuhsc.edu

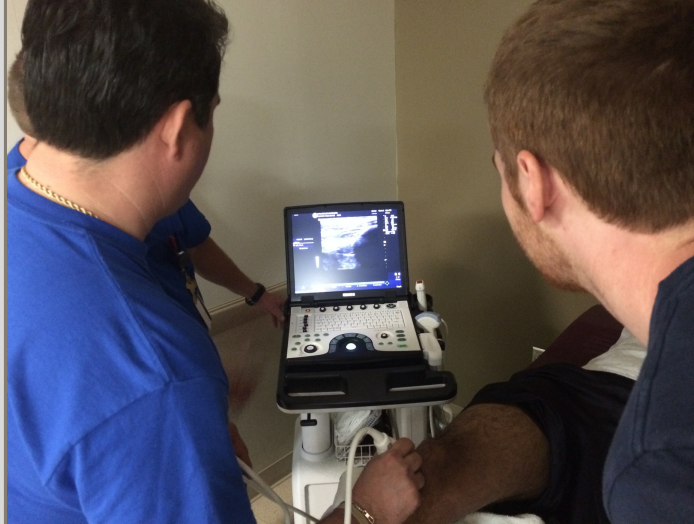
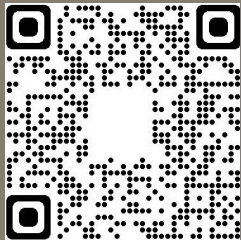
ADMISSIONS CONTACTS

 806-743-2297

 somadm@ttuhsc.edu

 <https://www.ttuhsc.edu/medicine/admissions/fmat.aspx>

For more information



FMAT SELECTION

Students seeking FMAT admissions are asked to complete an online application that includes the following short essay questions, at either application period:

- What motivates you to participate in the FMAT Program?
- What experiences have you had that would prepare you for this intensive program?
- What, in your opinion, distinguishes Family medicine from other medical specialties?

Selection to the program is based on academic performance, interest in Family Medicine, and an interview with the FMAT committee.

APPLICATION PROCESS

Students may apply for the FMAT program at two time periods:

- At the time that they apply for admission through TMDAS and complete the secondary application of TTUHSC School of Medicine.
- During the winter (November through January) of their MS1 year, once they have matriculated into the TTUHSC School of Medicine.

