



# **Annual Report**

## **FY2022**

*Promoting Patient-Oriented Research and Training*



### **EXECUTIVE DIRECTOR'S STRATEGIC PLAN:**

The CRI continues its mission, supporting clinical research interests for the faculty and trainees within the TTUHSC. The past year saw us focus our efforts in reestablishing a high-level division of biostatistics. This began with obtaining institutional approval of a full-time faculty position for the Director of the Division of Biostatistics. This faculty position is housed in the Department of Medical Education (DOME) within the School of Medicine, chair Dr. Betsy Jones. The full-time faculty position allowed us to elevate the applicant pool. I'm happy to report that this September we completed our search for the director of the division of biostatistics. We

welcome Stephanie Stroever, PhD who accepted the director position. She is now actively growing the division and providing expertise in the area of biostatistics. We appreciate very much Dr. Steven Berk and his efforts helping us establish a division of biostatistics that will be able to provide not only study design and statistical analysis of clinical studies but play a major role in the educational efforts in that area of biostatistics for all of our faculty and trainees. Over the last year CRI has also been working closely with Dr. Lance McMahon, SVP for Research as well as Dr. Kristyn Sorensen AVP for Research Integrity, working on plans to expand clinical research support efforts at all campuses in all schools.

Fiscal year 2022, with the wind-down of the pandemic, also showed a resurgence of new clinical projects both in projects reviewed and new CRI workorders submitted.

This new fiscal year, 2023, the CRI efforts will be to show significant increase in all metrics we measure, most importantly numbers of projects from all of the schools within the HSC as well as increasing clinical research activity at all of the campuses. We will be assisting Dr. Stroever in bringing in additional biostatistics staff for the new biostatistics' division. We will be working with Dr. McMahon in the Office of Research to increase the awareness and stature of clinical research throughout the HSC.

As always, the CRI will continue to support any and all clinical research efforts by TTUHSC faculty and trainees. We hope these efforts will contribute to the improvement of healthcare for the future.

*John Griswold, MD, FACS*

**SUMMARY:**

2022 saw the CRI experience a 62% increase in work orders requesting support on clinical projects (243 vs 150). Work orders for Lubbock SOM increased 101% from last FY, with a total of 221. The CRI continues to provide support for IRB preparation and submission of new and on-going projects. In FY22 the CRI submitted 1295 forms to the IRB; 219 of these were initial submissions of new studies; a more than 104% increase over last FY. The percentage of new studies approved by the IRB on first submission increased from 47% to 55%. Several metrics are below those of FY21, we believe these are directly related to the CRI having no full-time biostatisticians, being short-staffed. These metrics include: statistical analysis & reporting, abstracts, presentations and manuscripts, and the number of educational presentations by the CRI.

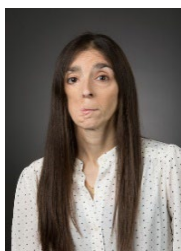
The CRI experienced a dramatic increase in FY22 in the number of medical students supported for clinical projects; more than 90. The CRI's research volunteer database established in 2011 to allow the general public to independently sign up to be contacted about possible clinical research participation continues to grow, up 14% to 626 volunteers this year. This database has been queried several times to help recruitment efforts for CRI facilitated projects.

The CRI's logo includes flames; each flame represents a TTUHSC school. With the FY22 addition of the Julia Jones Matthews School of Population and Public Health, we've added a 6<sup>th</sup> flame to the logo to represent the 6 schools at the TTUHSC. The other schools are: Graduate School of Biomedical Sciences, School of Health Professions, School of Medicine, School of Nursing, and the Jerry H. Hodge School of Pharmacy.

**FY22 Highlights****Achievements**

- The CRI implemented its new organizational chart in preparation for succession planning. We did this by promoting team members from within the CRI to leadership positions.

The following coordinators obtained phlebotomy certification:



Mariana Fiori, PhD



Erin Smith, BS, BA



William (Ben) Brugmann, PhD



Ben Brugmann obtained his ACRP CCRC certification October 2021



Victoria Johnson graduated with an MPH, December, 2021



Jammie Holland, LVN received the 2022 TTUHSC Distinguished Staff Award for Quality Staff as well as the 2021 CRI Service Excellence Award.

- CRI welcomed 3 new staff members:



Lane Young, BA



Erin Smith, BS, BA



Bailey Wheeler, BS

- 2022 Lorenz O. Lutherer, MD, PhD, Clinical Research Award



MS2 student Hannah Daniel won the 2022 Lorenz O. Lutherer, MD, PhD, Clinical Research Award for her work on “Association of Dynamic Motion of Cerebellar Tonsils in the Outcome in Pediatric Chiari I Malformation”. The project was awarded during the 34th Annual Student Research Week, which was held March 8-11, 2022.

### **Challenges**

- CRI Lubbock office has almost outgrown its current space on the 4<sup>th</sup> floor. Not having contiguous space has been discouraging for our team--- Regulatory staff are located away from the rest of the Lubbock CRI team in the link space (4AL-100).
- CRI has experienced its share of staff turnover in FY22. Some have left for personal reasons, others for career advancement. CRI leadership is committed to establishing ways to encourage staff retention, such as: competitive salaries, continuing education support, and flexible scheduling.
- Additionally, we’ve seen a big decrease in the number of statistical services provided due to not having any full-time biostatisticians or a Director of the Division of Statistical Services. We lost our full-time biostatisticians, one in the Director position, in Spring of FY21. Associated with having no statisticians, CRI had no work orders from outside the Lubbock and Permian Basin campuses this FY. Historically, work orders from those campuses were for biostatistical support.
- Permian Basin has a new Surgery Residency program. We will be working with those residents and the Permian Basin Department of Surgery to stimulate clinical research in that department.
- Ailena Mulkey, a valued team member, passed away unexpectedly in May, 2022. (See page 10)

**ACHIEVED GOALS & OBJECTIVES:**

The CRI continues to meet its objective for facilitating and growing clinical research activities at TTUHSC. The activities of the CRI during FY22 as compared to FY21 are summarized in the following tables/graphs:

<b>Table 1: Summary</b>	<b>2021</b>	<b>2022</b>	<b>%Change</b>
Number of New Clinical Research Studies to the IRB	107	219	104.67%
Number of Novice Investigators	29	28	-3.44%
Number of Forms Submitted to IRB	783	1295	65.38%
Protocol reviews	342	405	18.42%
Statistical Analysis & Reporting	210	32	-84.76%
*Abstracts Presented	19	14	-26.31%
<b>% Abstracts Presented – <i>PubMed Indexed</i></b>	<b>5.26%</b>	<b>0%</b>	<b>-100%</b>
*Research Presentations	44	36	-18.18
*Published Manuscripts	36	24	-33.33%
<b>% Published Manuscripts – <i>PubMed Indexed</i></b>	<b>72.22%</b>	<b>9.09</b>	<b>-87.41%</b>
Educational Presentations by CRI	21	6	-71.42%
Total studies closed/cancelled	17	17	0.0%
Total studies completed	32	41	28.13%

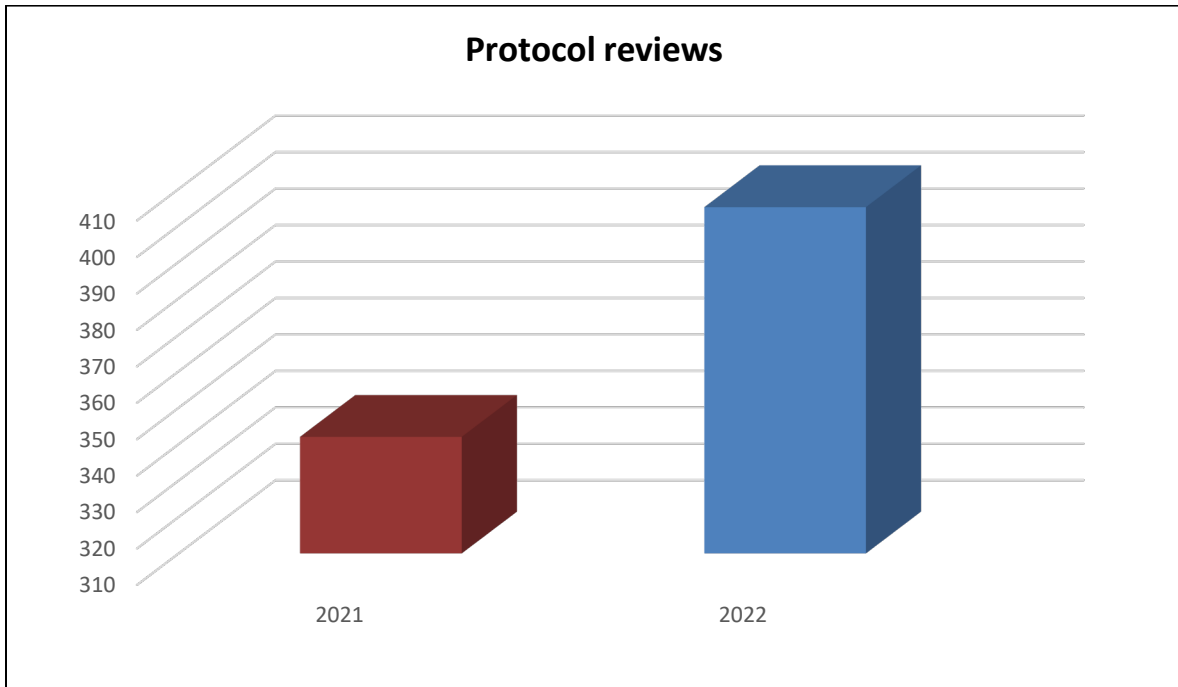
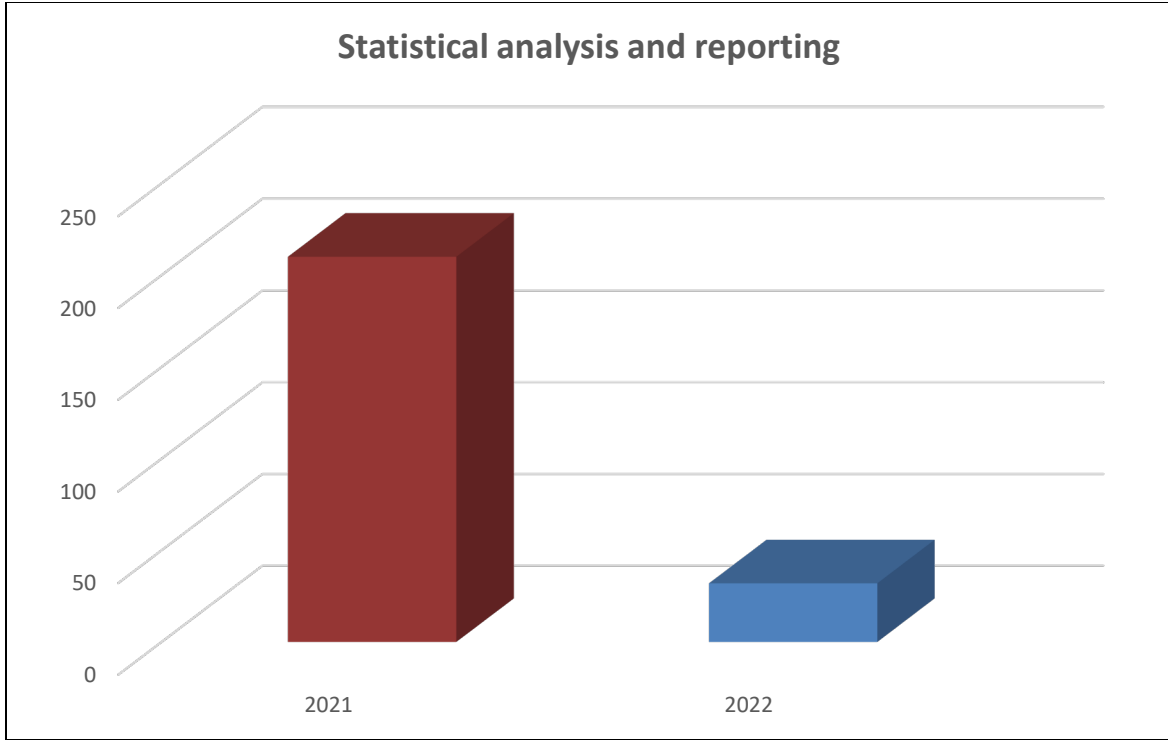
\*Number is dependent upon the CRI being notified of the abstract, presentation, and publication

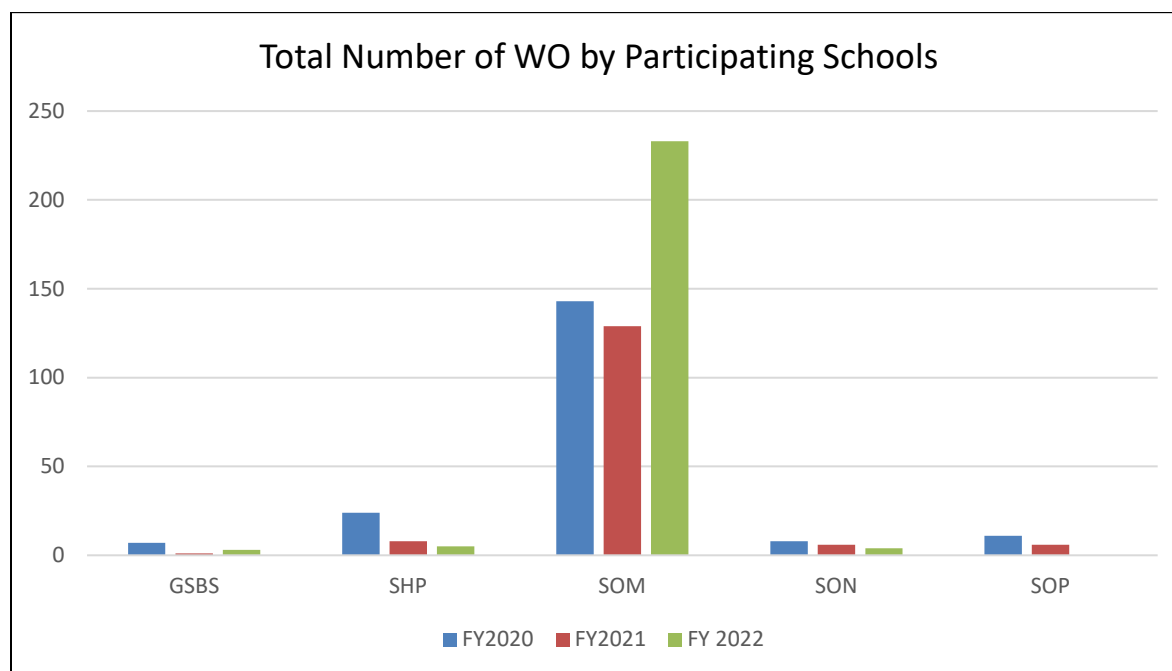
**FY22 approved work orders by campus**

<b>School</b>	<b>Lubbock</b>	<b>Odessa</b>	<b>Amarillo</b>	<b>Dallas</b>	<b>Abilene</b>	<b>Total # of WO by School</b>	<b>% of Total WO for each School</b>
<b>SOM</b>	<b>221</b>	<b>13</b>	<b>0</b>	<b>NA</b>	<b>NA</b>	<b>234</b>	<b>96.29%</b>
<b>SON</b>	<b>2</b>	<b>NA</b>	<b>NA</b>	<b>NA</b>	<b>NA</b>	<b>2</b>	<b>0.82%</b>
<b>SOHP</b>	<b>5</b>	<b>NA</b>	<b>NA</b>	<b>NA</b>	<b>NA</b>	<b>5</b>	<b>2.05%</b>
<b>SOP</b>	<b>NA</b>	<b>NA</b>	<b>NA</b>	<b>0</b>	<b>0</b>	<b>0</b>	<b>0%</b>
<b>*GSBS/PH</b>	<b>0</b>	<b>NA</b>	<b>NA</b>	<b>NA</b>	<b>NA</b>	<b>0</b>	<b>0%</b>
<b>UMC Nursing Research/Magnet</b>	<b>2</b>	<b>NA</b>	<b>NA</b>	<b>NA</b>	<b>NA</b>	<b>2</b>	<b>0.82%</b>
<b>TOTAL WO/by Campus</b>	<b>230</b>	<b>13</b>	<b>0</b>	<b>0</b>	<b>0</b>	<b>243</b>	

N/A indicates the school does not have a presence on that campus.

\*FY23 Public Health will be listed as a separate school





### **FUNDING:**

Primary funding for the CRI in FY22 came from Dr. Steven L. Berk, Dean and Executive Vice President for Clinical Affairs, through the TTUHSC School of Medicine Office of the Dean. The School of Medicine medical practice income plan (MPIP) and clinical departments in Lubbock provide additional funding support. The Department of Psychiatry, through Senate Bill 11, provides CRI with funding assistance; and CRI residual funds from previous industry sponsored research are also used. Moreover, the Dean of the School of Pharmacy contributes to the CRI overhead, along with a contractual arrangement between the CRI and University Medical Center in Lubbock for conduct of cancer studies. In the Permian Basin the School of Medicine Regional Dean's Fund, monies chiefly generated by the CMS uncompensated care program, finance much of the budget support for the Odessa CRI office.

### **MEMBERS:**

All faculty and trainees at TTUHSC are considered customers of the CRI. The Clinical Research Institute is governed by an Advisory Committee that met five times during FY22. It is composed of faculty representatives from all schools and campuses, the TTUHSC President and Executive Vice President for Clinical Affairs, the Senior Vice President for Research and Innovation, the Director of the TTUHSC Simulation Program, and the Executive Leadership team made up of the three Directors of the CRI: Executive Director John Griswold, MD; Thomas E. Tenner, Jr. PhD, Assistant Director; and Catherine Lovett, MSN, RN, Managing Director. The full list of CRI members is provided in Appendix A.

CRI has thirteen study coordinator positions: ten coordinators in Lubbock and three on the Permian Basin Campus. Since implementation of the succession planning organizational chart, four coordinators have dual roles as either a Director or a Manager and the study monitor is also the Director of Regulatory Affairs. There are two regulatory specialists for submissions to the IRB, an administrator, and an administrative assistant. We were not able to fill our Director of



Statistical Services position in FY22; and still have the other full-time biostats position and the two part-time graduate student positions vacant. We currently have two PRN/as needed statisticians: Silvia Jakubski, MS and Hasan Al Mekdash, PhD. The full list of CRI staff members is provided in Appendix B.

### **EDUCATION:**

Cathy Lovett, MSN, RN remains the Chairperson of the West Texas Chapter for the Society of Clinical Research Associates (SoCRA). Ms. Lovett recruits various speakers and topics to have a meaningful seminar series. The topics offer 1.0 Continuing Education Unit (CEU) hours. Further, leadership from CRI presents at New Faculty Orientation routinely. The CRI helped students in the 2022 Medical Student Summer Research Program navigate clinical research protocol design, IRB submission, and data analysis.

The CRI continues individual interactions with investigators and trainees. These meetings involve protocol development, study design, conduct of the study, data analysis, presentations, and publications. Our experienced research coordinators and study monitor are available for clinical studies. The entire CRI team works closely with investigators to assist with study completion with the intent to publish in MEDLINE/PUBMED journals. The CRI leadership has contributed to the recruitment efforts of the institution by discussing the role of the CRI with potential faculty employees.

### **DIRECT ASSISTANCE WITH THE STUDIES:**

CRI personnel work with the investigators and trainees during each phase of a proposed study.

1. Each investigator submits a draft protocol, following the template provided on the CRI website. The protocol includes the research question/s, the background forming the basis for the question, objectives, the hypothesis, the study design, the methodology to be used, the statistics for analysis, and the potential significance of the study results. Members of the CRI team, including the biostatistician, work closely with the investigator's team during this process.
2. Assistance is given in developing documents such as informed consent forms, data collection forms, surveys, the IRB application, and subsequent amendments/reports to the IRB.
3. After IRB approval, the research coordinators consent and enroll subjects, collect samples, data, and essentially conduct the study under the direction of the Principal Investigator.
4. Once study accrual has been completed, the biostatisticians analyze the data, construct tables and figures, and assist in writing the presentation/manuscript. Members of the CRI Executive Leadership are available and often assist the principal investigators in completing or revising the articles prior to submission to the journal of their choice.

Currently, CRI services are provided at no cost to the investigators due to the funding mechanisms in place. This unique system allows investigators to obtain pilot data necessary to support future funding requests. The CRI resources are invaluable to faculty with busy schedules and help to partially offset the lack of protected time for research.



## IN MEMORIAL

**Ailena Rene Mulkey**  
**May 18, 1977 ~ May 19, 2022**

Ailena Rene Mathis Mulkey was born in Odessa, Texas and raised in Crane, Texas. Even as a young girl, she always had the heart of a caregiver, so it was no surprise when she decided to be a nurse. She got her LVN (2002) and RN (2006) from Odessa College. Ailena earned an undergraduate certificate in Healthcare Administration from Colorado Christian University in May, 2021, then went on to get her BSN from the University of Texas, El Paso in October, 2021. She would have completed the Psychiatric Mental Health Nurse Practitioner Program at the University of Texas, El Paso in 2024. She was well on her way to accomplishing her dreams of opening a hope center for those in need.

The CRI was blessed with having Ailena join the team at TTUHSC in Odessa in March of 2013. It was clear she was an extraordinary human being, giving much of herself with compassion, energy, and professionalism to her co-workers, investigators and study participants. She became an Association of Clinical Research Professionals Certified Clinical Research Coordinator in 2015, further demonstrating her commitment to excellence and knowledge of clinical research. Her passion for learning, excellence and her work led to her promotion to Director of Clinical Research Operations for the Clinical Research Institute Permian Basin office in the Fall of 2021. Further, Ailena didn't just work full-time for TTUHSC-CRI, she also became a dedicated volunteer EMT and firefighter in 2015 for the Crane Volunteer Fire Department. She devoted countless hours to their fundraisers and events, and lost many hours of sleep going on ambulance or fire calls. She never complained, she always expressed how happy she was to be able to help others. Additionally, she was an amazing mother, making sure her children knew they were loved.

In her free time, Ailena loved to listen to rock and roll music, tend her flowers and plants, dance and spend time in nature, especially at the lake. Ailena died on May 19, 2022; leaving a piece of herself in everyone she knew and loved; never to be forgotten.

### **She Was There**

*When a calming, quiet presence was all that was needed, She was there.*  
*In the excitement and miracle of birth or in the mystery and loss of life, She was there.*  
*When a silent glance could uplift a patient, family member or friend, She was there.*  
*At those times when the unexplainable needed to be explained, She was there.*  
*When the situation demanded a swift foot and sharp mind, She was there.*  
*When a gentle touch, a firm push, or an encouraging word was needed, She was there.*  
*In choosing the best one from a family's "Thank You" box of chocolates, She was there.*  
*To witness humanity, — its beauty, in good times and bad, without judgment, She was there.*  
*To embrace the woes of the world, willingly, and offer hope, She was there.*  
*And now, that it is time to be at the Greater One's side, She is there.*

A poem by Duane Jaeger, RN, MSN, from the Nightingale Tribute

# Appendix

**A. CRI Advisory Committee Members**

Alyce Ashcraft, PhD, RN, CNE, FNGNA, ANEF, School of Nursing

Steven Berk, MD, Executive Vice President for Clinical Affairs

Sharon Decker, RN, PhD, ANEF, FAAN, TTUHSC Simulation Program

John Griswold, MD, FACS, Executive Director, CRI

Ron Hall II, PharmD, MSCS, School of Pharmacy, Dallas Campus

Catherine Lovett, MSN, RN, CCRC, CCRP, Managing Director, CRI

Lance McMahon, PhD, Senior Vice President, Office of Research

Lavi Oud, MD, School of Medicine, Permian Basin Campus

Lori Rice-Spearman, PhD, President

Leslie Shen, PhD, CCRP, School of Medicine

Phil Sizer, Jr. PT, PhD, School of Health Professions

Thomas E. Tenner, Jr. PhD, Assistant Director, CRI

Gary Ventolini, MD, School of Medicine, Permian Basin Campus,

## **B. Clinical Research Institute Team**

### **Lubbock:**

Mhd Hasan Al Mekdash, MA, MS, PhD, PRN Biostatistician

Staci Brown, Administrative Assistant

William “Ben” Brugmann, PhD, CCRC, Clinical Research Coordinator

Mariana Fiori, PhD, Section Manager, Cancer Studies/Clinical Research Coordinator

John Griswold, MD, FACS, Executive Director

Silvia Jakubski, MS, PRN Biostatistician

Victoria Johnson, MPH, BS, Clinical Research Coordinator

Rylee Law, LVN, BS, Section Manager, Regulatory Affairs/Clinical Research Coordinator

Catherine J. Lovett, MSN, RN, CCRC, CCRP, Managing Director

Josie Martinez, Clinical Department Administrator

Amanda Romero, MS, RN, CCRC, Director of Regulatory Affairs/Monitor

Chris Scott Johnson, MSN, RNC, CCRC, CA/CP, SANE, Director of Clinical Research Operations/Clinical Research Coordinator

Erin Smith, BS, BA, Clinical Research Coordinator

Thomas E. Tenner, Jr. PhD, Assistant Director

Bailey Wheeler, BS, Regulatory Specialist

Lane Young, BA, Clinical Research Coordinator

### **Permian Basin**

Jammie Holland, LVN, CCRC, Clinical Research Coordinator

Evangelina Santiago, LVN, CCRC, Clinical Research Coordinator

### C. Dissemination of Information

#### Abstracts (14) \*PubMed

Abla H, Pang AW, Shaw C, Bharadia D, Griswold J. Accessing resuscitation needs in burn patients with varying degrees of liver disease. American College of Surgeons Scientific Forum, October 16-20, 2022, San Diego, CA

Cole, J, Perabo, A, Pang, AW, Robison, K, Bharadia, D, Griswold, J. Weight Percentile And Intentional Burns in The Pediatric Population. Congress of the International Society for Burn Injuries. *Accepted as published abstract*

Credo R, Pang AW, Bharadia D, Griswold J. Acute intermittent porphyria in a burn patient: Case study and review of the literature. Congress of the International Society for Burn Injuries, Brigham and Women's Hospital Dermatology Virtual Symposium, May 25, 2022, Boston, MA

Credo R, Corbitt S, Wall J, Brown E, Abidi H, Onuoha M, Shaw C, Huynh J, Pang AW, Bharadia D, Griswold J. Fluid resuscitation in burn patients: A retrospective analysis on methamphetamine's role in fluid extravasation. Congress of the International Society for Burn Injuries, Brigham and Women's Hospital Dermatology Virtual Symposium, May 25, 2022, Boston, MA

Hopkins K, Remington C, Rivas S, Eilers M, Moore L, Wallace HC, Hampton RM, Ogburn T. Obtaining buy-in for immediate postpartum long-acting reversible contraception programs in Texas hospitals: A qualitative study. *Contraception*, Elsevier, Volume 108, April 2022, Pages 32-36, <https://doi.org/10.1016/j.contraception.2021.10.016>

Moore D. Tummy time for your career: Strengthening your core with a departmental personal development book club. CREOG & APGO Annual Meeting, March 2022, Orlando FL

Pham T, Pang AW, Bharadia D, Griswold J. Integration of innovative burn surgical treatments to decrease length of stay. Congress of the International Society for Burn Injuries, Brigham and Women's Hospital Dermatology Virtual Symposium, May 25, 2022, Boston, MA

Raghuram A, Pang AW, Tapp R, Siddiqui K, Jilani T, Bharadia D, Griswold J. Retrospective study evaluating the role of sunlight exposure and fenestration in burn surgical complication rates and length of stay. Congress of the International Society for Burn Injuries, Brigham and Women's Hospital Dermatology Virtual Symposium, May 25, 2022, Boston, MA

\*Ray C, Marsh H, Gilmore J, Kirk D, Larumbe-Zabala E, Freedman K. Review of 451 Patients presenting with orbital wall fractures: A retrospective analysis. *The Journal of Craniofacial Surgery*, Volume 00, Number 00, 2022 doi: 10.1097/SCS.00000000000008959, PMID: 35994738

Rizvi, M, Brown E, Koshy R, Credo R, Grossman H, Hardy K, Alshaikhsalama M, Devega R, Bharadia D, Pang AW, Griswold J. Symptomatology of Hypertrophic Scarring in Full and Partial Thickness Burns Using Autologous Keratinocyte Suspension in Conjunction with Split Thickness Skin Grafts. American College of Surgeons Scientific Forum. *Accepted as published abstract*

Santos A, Vaughan J. Negative pressure incision management for abdominal wounds in exploratory laparotomies with coexisting colostomy. Society of Critical Care Medicine, 51st Critical Care Congress, San Juan Puerto Rico, January 2022, Volume 50, Issue 1, p 338, doi: 10.1097/01.ccm.0000809080.86245.65

Shen CL, Newman JW, Elmassry MM, Borkowski K, Chyu MC, Kahathuduwa C, Neugebauer V, Watkins BA. Tai Chi improves plasma levels of oxylipins and endocannabinoids in postmenopausal women with knee osteoarthritic pain. 2022 International Congress on Integrative Medicine and Health, May 23-26, 2022, Phoenix, AZ

Siddiqui K, Pang AW, Bharadia D, Griswold J. Disseminated intravascular coagulation in burn injury: A case report. American College of Surgeons Scientific Forum, October 16-20, 2022, San Diego, CA

Zeitouni J, Hadidi Y, Pang AW, Bharadia D, Griswold J. Late Occurrence of a Large Bilateral Pulmonary Embolism in an Electrical Burn Injury: A Case Study. CHEST. *Accepted as published abstract*

### Journal Articles (24) \*PubMed

\*Abla H, Brown E, Pang AW, et al. Synergistic use of novel technological advances in burn care significantly reduces hospital length of stay below predicted: A case series. J Burn Care Res. doi: 10.1093/jbcr/irac133, PMID: 36075204

\*Alser O, Dissanaik S, Shrestha K, Alghoul H, Onkendi E. Indications and outcomes of completion cholecystectomy: A 5-year experience from a rural tertiary center. The American Surgeon, Vol. 0(0) 1-6, doi: 10.1177/0003134822124331, PMID: 36031961

Chol E, George A, Jakubski S, Al-Mekdash MH, Sharma P. Frailty is an independent predictor of 90-day complications following robot-assisted radical prostatectomy. The Southwest Respiratory and Critical Care Chronicles 2022;10(44):15-21 doi: 10.12746/swrccc.v10i44.1063

Dev R, Sharifi K, Ivos M, Rossettie S, Moreno T, Chung C, Puckett Y, Alhaj-Saleh A, Caroom C, Ronaghan C, Richmond R. Cell salvage usage in acetabular fractures and open pelvic repairs, *In Preparation*

\*Franco H. Testing the impact of an online mindfulness program on prelicensure nursing students stress and anxiety. Nursing Forum, 57(2), 288-297. <https://doi.org/10.1111/nuf.12679>, PMID: 34842281

\*Garza J, Gandhi K, Choi S, Sanchez A, Ventolini G. Cytokine profiles and lactobacillus species presence in pre-menopausal subjects with genital mycoplasma genitalium or ureaplasma urealyticum colonization. US National Library of Medicine National Institutes of Health. Women's Health (Lond) doi: 10.1177/17455065211009181, PMID: 33866885

Hoelscher SH, McBride S, Bumpus S. Preparing for the future: Establishing a national consensus on nursing crisis documentation. CIN: Computers, Informatics, Nursing: April 23, 2022 - Volume - Issue - 10.1097/CIN.0000000000000896

Householder N, Agyare K, Thipaphay S, Raghuram A, Zumwalt M. A review of recent innovations in cartilage regeneration strategies for the treatment of primary osteoarthritis of the knee: Intra-articular injections, Orthopedic Journal of Sports Medicine, *Submission in preparation/press*

\*Johnson BK, Song H, Culberson J. Technology guided assessment for urinary tract infection: Creating a common interprofessional language. Innovation in Aging, 5(S1), 879. <https://doi.org/10.1093/geroni/igab046.3202>, PMID: 33262580

\*McBride S, Hoelscher SH, Bumpus S, Mitchell MB, Tietze M. Crisis documentation strategies to reduce burden of documentation during the pandemic: Texas' pilot to generate consensus. Computers Informatics Nursing, 39(10), 524-526. <https://doi.org/10.1097/CIN.0000000000000842>, PMID: 34623336

McComb J, Zumwalt M, Norman R. The active female: Health issues throughout of lifespan, 3<sup>rd</sup> edition Springer Nature Textbook, Edition number 2, ISBN: 9781461488835

Norman B, Griswold J, Senanayake C, Pang AW, Tucker A, Venable A, Wakil A, Hood A. Reducing burn patient over triage: Identifying target patient groups for designing interventions. *Journal of Burn Care & Research (Accepted for Publication)*

\*Owen DC, Ashcraft A, Johnson B, Song H, Culberson J. Technology guided assessment for urinary tract infection: Creating a common interprofessional language. *Innovation in Aging*, 5(S1), 879. <https://doi.org/10.1093/geroni/igab046.3202>, PMID: PMC8682660

Pang AW, Pham T, Felan S, Raghuram A, Terry M, Bharadia D, Griswold J. Autologous skin cell suspension application for toxic epidermal necrolysis. *Journal of Burn Care & Research*, Volume 43, Issue 2, March/April 2022, Pages 508-513, <https://doi.org/10.1093/jbcr/irab243>

Sellers J, Ward E, Weaver P, Garza J, Brandi L, deRiese W. Association of prostate size with capsule thickness and glandular epithelial cell density: The possible clinical implications on prostate cancer development. *Journal of Clinical Urology*, April 18, 2022, <https://doi.org/10.1177/20514158221086399>

\*Sheladia S, Reddy H. Age-related chronic diseases and Alzheimer's Disease in Texas: A Hispanic-focused study. *J Alzheimers Dis Rep*. 2021 Feb 24;5(1):121-133. doi: 10.3233/ADR-200277 PMID: 33782665

\*Shen CL, Watkins B, Kahathuduwa C, Chyu M, Zabet-Moghaddam M, Elmassry M, Luk H, Brismee J, Knox A, Lee J, Zumwalt M, Wang R, Wager T, Neugebauer V. Tai chi improves brain functional connectivity and plasma lysophosphatidylcholines in postmenopausal women with knee osteoarthritis: An exploratory pilot study. *Frontiers in Medicine*, doi: 10.3389/fmed.2021.775344, PMID:35047525

\*Shen CL, Mo H, Dunn DM, Watkins BA. Tocotrienol supplementation led to higher serum levels of lysophospholipids but lower acylcarnitines in postmenopausal women: A randomized double-blinded placebo-controlled clinical trial. *Frontiers in Nutrition*, doi: 10.3389/fnut.2021.766711, PMID: 35004805

Singhal E, Xu T, Dhanasekara C, Al-Mekdash MH, Anaeye D, Lazarus J, Alhaj-Saleh A, Tucker A, Dissanaik S. Comparing outcomes between patients transferred from a critical access hospital versus directly from scene to a Level 1 trauma center. *The American Journal of Surgery*, Vol 224, Issue 3, September 2022, Pages 828-833, <https://doi.org/10.1016/j.amjsurg.2022.01.034>

Stuart D, Griswold J, Lovett C. Effectiveness of evidence-based medicine instruction in medical school clerkships. *The Southwest Respiratory and Critical Care Chronicles* 2022;10(42):1–7, doi: 10.12746/swrccc.v10i42.977

\*Ventolini G, Sanchez A, Lee B, Gandhi K, Garza J. A rare case report: Cutaneous candida tropicalis infection disguised as a sacral decubitus rash in an immunocompetent individual. *J Infect Public Health*. 2021 Aug. 14(8): 1018-1020, doi: 10.1016/j.jiph.2021.05.013, PMID: 34153726

Ventolini G, Sanchez A, Gandhi K, Garza J, Gibson A, Manales N. Original research: Variations in cytokine profiles between parous and nulliparous adult women. *Gynecological and Reproductive Endocrinology and Metabolism Gynecological and Reproductive Endocrinology & Metabolism (GREM)* doi.org/10.53260/grem.223016



Ventolini G, Gandhi K, Manales N, Garza J, Sanchez A, Martinez B. Challenging vaginal discharge: Lactobacillosis and cytolytic vaginitis. *Journal of Family and Reproductive Health*, Vol 16, No 2 (June 2022) doi: <https://doi.org/10.18502/jfrh.v16i2.9477>

\*Zeitouni F, Zhu C, Pang A, O'Banion S, Bharadia D, Griswold J. Vitamin A induced hypercalcemia in burn patients: A case study [*published online ahead of print*, 2022 Jul 22] *J Burn Care Res*. 2022; irac101. doi:10.1093/jbcr/irac101, PMID: 35867995

### **Presentations (36)**

Abidi H, Pang AW, Griswold J. Burns at the Ballpark: A case study. Reinforcing the Importance of Sunscreen in Preventing Severe Sun Burns in Infants. 21<sup>st</sup> Congress of the International Society for Burn Injuries, August 28-September 1, 2022, Guadalajara, Mexico

Abla H, Pang AW, Batchinsky M, Raghuram A, Bharadia D, Griswold J. Synergistic surgical treatment decreases length of stay in burn ICU: A case series. Academy Health Annual Research Meeting, June 4-7, 2022, Washington, DC

Bradshaw E, Pang AW, Bharadia D. Using geography as a predictive factor of outcomes in burn care follow-up in rural West Texas. Southwestern Surgical Congress, 73<sup>rd</sup> SWSC Annual Meeting 2022, Apr 24-27, 2022, Wigwam/Phoenix, AZ

Bradshaw E, Pang AW, Bharadia D. Using geography as a predictive factor of outcomes in burn care follow-up in rural West Texas. North Texas Chapter of American College of Surgeons Annual Meeting, February 3-5, 2022, Fort Worth, TX

Bradshaw E, Pang AW, Bharadia D, Griswold J. Using geography as a predictive factor of outcomes in burn care follow-up in rural West Texas. Texas Surgical Society Annual Conference, April 22-24, 2022, Lubbock, TX

Brown E, Koshy R, Credo R, Grossman H, Hardy K, Rizvi M, Alshaikhsalama M, Devega R, Bharadia D, Pang AW, Griswold J. Autologous keratinocyte suspension in conjunction with fibrin sealant for the treatment of partial thickness burns. John A Boswick M.D. Burn and Wound Healing Symposium, January 22-27, 2022, Wallea Beach Resort, Maui HI

Brown E, Koshy R, Credo R, Grossman H, Hardy K, Rizvi M, Alshaikhsalama M, Devega R, Bharadia D, Pang AW, Griswold J. Range of motion in Recell plus STSG vs STSG alone in 2<sup>nd</sup> and 3<sup>rd</sup> degree burns. Southwestern Surgical Congress. 73<sup>rd</sup> SWSC Annual Meeting 2022, Apr 24-27, 2022, Wigwam/Phoenix, AZ

Brown E, Koshy R, Credo R, Grossman H, Hardy K, Rizvi M, Alshaikhsalama M, Devega R, Bharadia D, Pang AW, Griswold J. Range of motion in Recell plus STSG vs STSG alone in 2<sup>nd</sup> and 3<sup>rd</sup> degree burns. Southwestern Surgical Congress. Joint Meeting of the North Texas Chapter of American College of Surgeons and Southwestern Surgical Congress. Texas Association of Bariatric Surgery, February 3-5, 2022, Fort Worth, TX

Brown E, Koshy R, Credo R, Grossman H, Hardy K, Rizvi M, Alshaikhsalam M, Devega R, Bharadia D, Pang AW, Griswold J. Autologous keratinocyte suspension in conjunction with fibrin sealant for the treatment of partial thickness burns. John A. Boswick M.D. Burn and Wound Healing Symposium, January 22-27, 2022, Wallea Beach Resort, Maui HI

Credo R, Pang AW, Bharadia D, Griswold J. Acute intermittent porphyria in a burn patient: Case study and review of the literature. 21<sup>st</sup> Congress of the International Society for Burn Injuries, August 28 - September 1, 2022, Guadalajara, Mexico

Credo R, Corbitt S, Wall J, Brown E, Abidi H, Onuoha M, Shaw C, Huynh J, Pang AW, Bharadia D, Griswold J. Fluid resuscitation in burn patients: A retrospective analysis on methamphetamine's role in fluid extravasation. 21<sup>st</sup> Congress of International Society for Burn Injuries, August 28 - September 1, 2022, Guadalajara, Mexico

Crenshaw JT, Adams EA, Gilder RE, DeButy K, Scheffer KL. Outcomes of immediate skin-to-skin care (SSC) during cesareans: A quasi-experimental study. Academy of Breastfeeding Medicine 26th Annual International Meeting, November 3-6, 2021 [Webinar]

Householder N, Rutayomba E, Agyare K, Zumwalt M. Experimental intra-articular injections for the treatment of primary knee OA. Texas Tech University Health Sciences Center Research Week, March 8-11, 2022, Lubbock, TX

Householder N, Rutayomba E, Agyare K, Zumwalt M. Literature review- experimental intra-articular injections targeting of OA pathology. Texas Surgical Society Conference, April 22-24, 2022, Lubbock, TX

Huseman K, Chapina-Guizar A, Zumwalt M. COVID-19's impact on TTUHSC Graduate & Medical students' exercise routines. Texas Tech University Health Sciences Center, Research Week, March 8-11, 2022, Lubbock, TX

Koshy R, Brown E, Pang AW, Bharadia D, Griswold J. Postoperative splinting vs free range of motion and effect on healing time of Recell for partial thickness burns. Southwestern Surgical Congress, 73<sup>rd</sup> SWSC Annual Meeting 2022, Apr 24-27, 2022, Wigwam/Phoenix, AZ

Koshy R, Brown E, Pang AW, Bharadia D, Griswold J. Postoperative splinting vs free range of motion and effect on healing time of Recell for partial thickness burns. Joint Meeting of the North Texas Chapter of American College of Surgeons and Texas Association of Bariatric Surgery, February 3-5, 2022, Fort Worth, TX

Owen DC, Ashcraft A, Johnson B, Song H, Culberson, J. Technology guided assessment for urinary tract infection: Creating a common interprofessional language. 2021 Gerontological Society of America Annual Conference, Gerontological Society of America, November 10-14, 2021, Phoenix, AZ

Pang, AW, Brown, E, Bharadia, D, Griswold, J. Serial Casting for the Improvement of contractures after burn injuries, a case report. 21<sup>st</sup> Congress of the International Society for Burn Injuries. August 28 – September 1, 2022, Guadalajara, Mexico, *Podium Presentation*

Pang, AW, Pham, T, Bharadia, D, Griswold, J. Integration of Innovative Burn Surgical Treatments to Decrease Length of Stay. 21<sup>st</sup> Congress of the International Society for Burn Injuries. August 28 – September 1, 2022, Guadalajara, Mexico, *Podium Presentation*

Pang AW, Pham T, Felan S, Raghuram A, Terry M, Bharadia D, Griswold J. Autologous skin cell suspension application for toxic epidermal necrolysis: A case report. American Burn Association Annual Conference, April 5-8, 2022, Las Vegas, NV

Pang AW, Pham T, Raghuram A, Zeitouni J, Aikerath G, Dang M, Bharadia D, Griswold J, Comparison of amalgatome SD to standard dermatome for surgical excision of burns and skin graft harvesting. John A

Boswick M.D. Burn and Wound Healing Symposium, January 22-27, 2022, Wallea Beach Resort, Maui HI

Pang AW, Cole J, Perabo A, Robison K. Weight percentile and intentional burns in the pediatric population. 21<sup>st</sup> Congress of the International Society for Burn Injuries, August 28 - September 1, 2022, Guadalajara, Mexico

Perry C, Wynn A, Dowdle T, Bruce C, Bishop K. The influence of rural vs urban hometown on medical students' knowledge and perceptions toward opioids and the opioid epidemic. University of Texas Health School of Public Health Research Beyond Boundaries Conference, April 16, 2021, Houston TX

Petrie K, Chen J, Miars H, Grimes JS, Zumwalt M. Gender differences in seeking healthcare and post-intervention pain outcomes in foot and ankle orthopedic patients. LWBIWH Sex and Gender Health Symposium, October 22, 2021, Lubbock, TX

Raghuram A, Pang AW, Zeitouni J, Jang W, Householder N, Ronaghan C, Griswold J. Temporizing matrix and autologous skin cell suspension in necrotizing soft tissue infection. North Texas Chapter of American College of Surgeons Annual Meeting, February 3-5, 2022, Fort Worth, TX

Raghuram A, Pang AW, Zeitouni J, Jang W, Householder N, Griswold J, Ronaghan C. Biodegradable temporizing matrix and autologous skin cell suspension in necrotizing soft tissue infections. John A Boswick M.D. Burn and Wound Healing Symposium, January 22-27, 2022, Wallea Beach Resort, Maui HI

Raghuram A, Pang AW, Zeitouni J, Jang W, Householder N, Griswold J, Ronaghan C. Biodegradable temporizing matrix and autologous skin cell suspension in necrotizing soft tissue infections. Joint Meeting of the North Texas Chapter of American College of Surgeons and Texas Association of Bariatric Surgery, February 3-5, 2022, Fort Worth, TX

Raghuram A, Pang AW, Tapp R, Siddiqui K, Jilani T, Bharadia D, Griswold J. Retrospective study: Evaluating the role of sunlight exposure and fenestration in burn surgical complication rates and length of stay. 21<sup>st</sup> Congress of the International Society for Burn Injuries, August 28 - September 1, 2022, Guadalajara, Mexico

Raghuram A, Pang AW, Zeitouni J, Tuazon C, Ronaghan C, Griswold J. Negative-pressure therapy and autologous skin cell suspension skin cell suspension in necrotizing soft tissue infection. Joint Meeting of the North Texas Chapter of American College of Surgeons and skin cell suspension in necrotizing soft tissue infection., February 3-5, 2022, Fort Worth, TX

Raghuram A, Pham T, Pang AW, Griswold J. Serial Envenomation in a Snake Handler with Severe Coagulopathy: A Case Study. North Texas Chapter of American College of Surgeons, February 3-5, 2022, Fort Worth, TX

Siddiqui, K, Pang, AW, Bharadia, D, Griswold, J. Disseminated Intravascular Coagulation in Burn Injury: A case report. 21<sup>st</sup> Congress of the International Society for Burn Injuries, August 28 - September 1, 2022, Guadalajara, Mexico

Sikes DL, Hillard TC, Song H, Henly S, Chapman K, Armstrong ML. Veteran to BSN-Transition Assistance into Professional Nursing (TAP-N) Breaking barriers enhancing value by improving outcomes that shape student success. Council of College and Military Educators 2022 Annual Symposium, February 7-10, 2022, San Antonio, TX

Sikes DL. Expanding the PATH (Prospect, Admissions, Training, Honors) for student's veterans in nursing. Association for Leadership Science in Nursing. April 6, 2022, [Virtual]  
<https://www.nursingleadershipscience.org/event-4682145>

Zeitouni, J, Pang, AW, Bradshaw, E, Rizvi, M, Bharadia, D, Griswold, J. "Alkali injury with non-operative management in a pediatric patient: a case report." North Texas Chapter of American College of Surgeons Annual Meeting, February 3-5, 2022, Fort Worth, TX

Zeitouni, J, Pang, AW, Bradshaw, E, Rizvi, M, Bharadia, D, Griswold, J. "Alkali injury with non-operative management in a pediatric patient: a case report." Southwestern Surgical Congress, 73<sup>rd</sup> SWSC Annual Meeting 2022, Apr 24-27, 2022, Wigwam/Phoenix, AZ